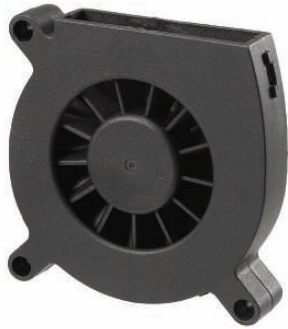


# B6010I Series 60mmx60mmx10mm

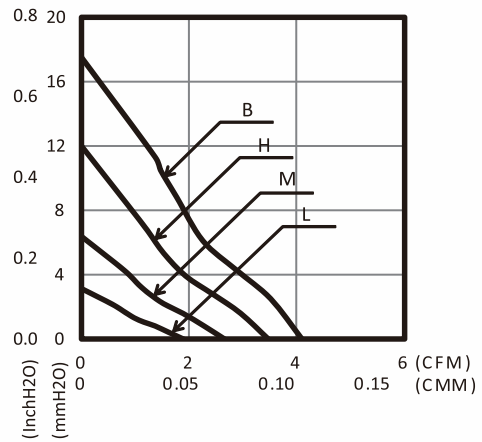
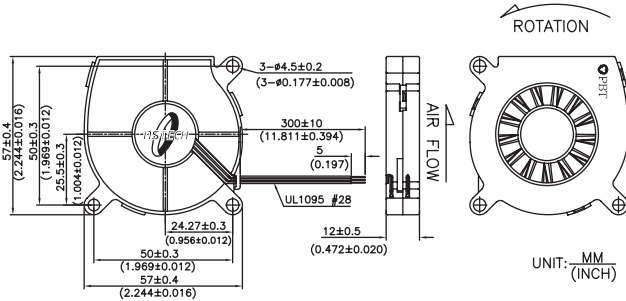


- Bearing Type : Long Life, SleeveBall Bearing
- Function Type (Optional) : FG Signal, RD Signal
- Protection :  
Auto Restart Protection
- Lead Wire :  
UL 1095 AWG #28 OR Equivalent  
Red Wire : Positive (+)  
Black Wire : Negative (-)  
Yellow Wire : FG Signal  
White Wire : RD Signal



## PERFORMANCE CURVES

## DIMENSIONS DRAWING



BLOWER FAN

Specification												
Model	Function	Rated Voltage	Operating Voltage	Rated Current	Input Current	Input Power	Rated Speed	Air Flow		Air Pressure		Noise
		VDC	VDC	Amp	Amp	Watt	RPM	CMM	CFM	mmH <sub>2</sub> O	InH <sub>2</sub> O	dBa
PABD06010S L/BL (-) Yxxx	0000/P000 F000/R000 PF00/PRO0 M000/MF00 MR00	5	4.5~5.5	0.08	0.06	0.30	2500	0.05	1.88	3.12	0.12	11.0
PABD06010S M/BM (-) Yxxx		5	4~5.5	0.15	0.10	0.50	3500	0.08	2.65	6.38	0.25	21.0
PABD06010S H/BH (-) Yxxx		5	4~5.5	0.25	0.24	1.20	4500	0.10	3.46	12.02	0.47	29.0
PABD16010S L/BL (-) Yxxx		12	10.8~13.8	0.05	0.04	0.48	2500	0.05	1.88	3.12	0.12	11.0
PABD16010SM/BM (-) Yxxx		12	9~13.8	0.08	0.07	0.84	3500	0.08	2.65	6.38	0.25	21.0
PABD16010SH/BH (-) Yxxx		12	6~13.8	0.12	0.11	1.32	4500	0.10	3.46	12.02	0.47	29.0
PABD16010SB/BB (-) Yxxx		12	6~13.2	0.22	0.17	2.04	5500	0.12	4.10	17.50	0.69	37.0
PABD16010BT (-) Yxxx		12	6~13.2	0.35	0.31	3.72	6500	0.13	4.64	21.93	0.86	44.0

\* Function type : Y is the 1st letter of suffix number of model number which denotes special models designed for specific applications.  
x denotes unassigned suffix number of model number. Final model number will be followed by 4-digit suffix number upon completion of customization. Please contact us for customization consultation.

\* The data shows typical value at rated voltage.

\* Sound level is measured at the distance of one meter from fan intake side.

\* Specifications are subject to change without notice.