

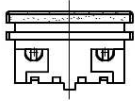
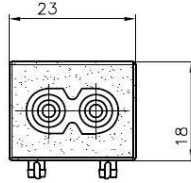
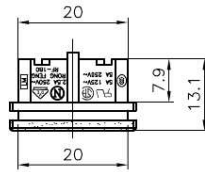
CONNECT YOUR LIFE...

**HIGH QUALITY  
SAFETY QUARANTEED**

## RF-180 Series

Standard: IEC 60320 C8  
Rating: 2.5/5A/7A 125/250V AC  
Approvals: UL/CSA

Rating: 2.5A 250V AC  
Approvals: VDE/SEMKO/CCC/BSMI/  
KTL



RF-180-A



RF-180



RF-180-ILC



RF-180-S



RF-180-BB



RF-180-R



RF-180-Q



RF-180-Y



RF-180-G



RF-180-HS

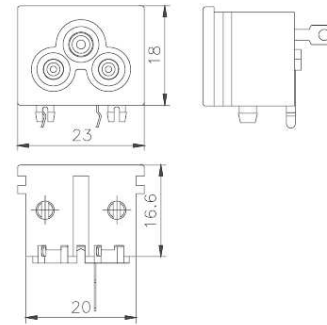


RF-180-J

## RF-190 Series

Standard: IEC 60320 C6  
Rating: 2.5/5A 125/250V AC  
Approvals: UL/CSA

Rating: 2.5A 250V AC  
Approvals: VDE/NEMKO/CCC/  
BSMI/KTL



RF-190



RF-190-B



RF-190-F



RF-180-Q

## SS-3A Series

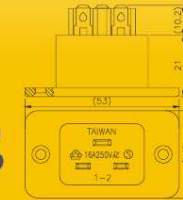
Standard: IEC 60320 C20  
Rating: 20A 125/250V AC  
Approvals: UL/CUL/CSA

Rating: 16A 250V AC  
Approvals: VDE/SEMKO/  
CCC/KTL

### TERMINAL MODEL



SS-3A



## SS-3B Series

Standard: IEC 60320 C20  
Rating: 20A 125/250V AC  
Approvals: UL/CUL/CSA

Rating: 16A 250V AC  
Approvals: VDE/SEMKO/  
CCC/KTL



SS-3B

## SS-7B Series

Standard: IEC 60320 C14  
Rating: 15A 250V AC  
Approvals: UL/CSA

Rating: 10A 250V AC  
Approvals: VDE/CCC/BSMI/KTL  
/SEMKO

TERMINAL MODEL	
4.8	
4.0	

## SS-7BA Series

Standard: IEC 60320 C18  
Rating: 15A 250V AC  
Approvals: UL/CUL  
Rating: 10A 250V AC  
Approvals: VDE/CCC



## SS-7BB Series

**(Hot Condition)**  
Standard: IEC 60320 C16  
Rating: 15A 250V AC  
Approvals: UL/CUL

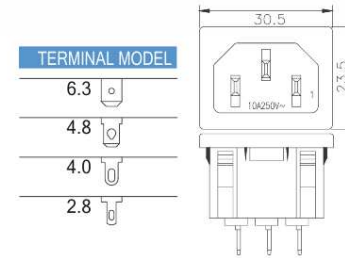
Rating: 10A 250V AC  
Approvals: VDE/CCC/BSMI



## SS-120 Series

Standard: IEC 60320 C14  
Rating: 15A 125/250V AC  
Approvals: UL/CSA

Rating: 10A 250V AC  
Approvals: VDE/SEMKO/CCC/  
BSM/KTL



## SS-7B-1 Series

Standard: IEC 60320 C14  
Rating: 15A 250V AC  
Approvals: UL/CSA  
  
Rating: 10A 250V AC  
Approvals: VDE/CCC/BSMI/KTL  
/SEMKO



## SS-7B-1A

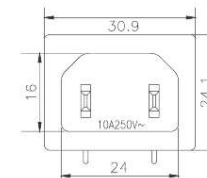
Standard: IEC 60320 C18  
Rating: 15A 250V AC  
Approvals: UL/CSA  
Rating: 10A 250V AC  
Approvals: VDE



## SS-120A Series

Standard: IEC 60320 C18  
Rating: 15A 250V AC  
Approvals: UL/CSA

Rating: 10A 250V AC  
Approvals: TUV/CCC



## SS-120B Series

**(Hot Condition)**  
Standard: IEC 60320 C16  
Rating: 15A 250V AC  
Approvals: UL/CUL

Rating: 10A 250V AC  
Approvals: VDE/CCC/BSMI

